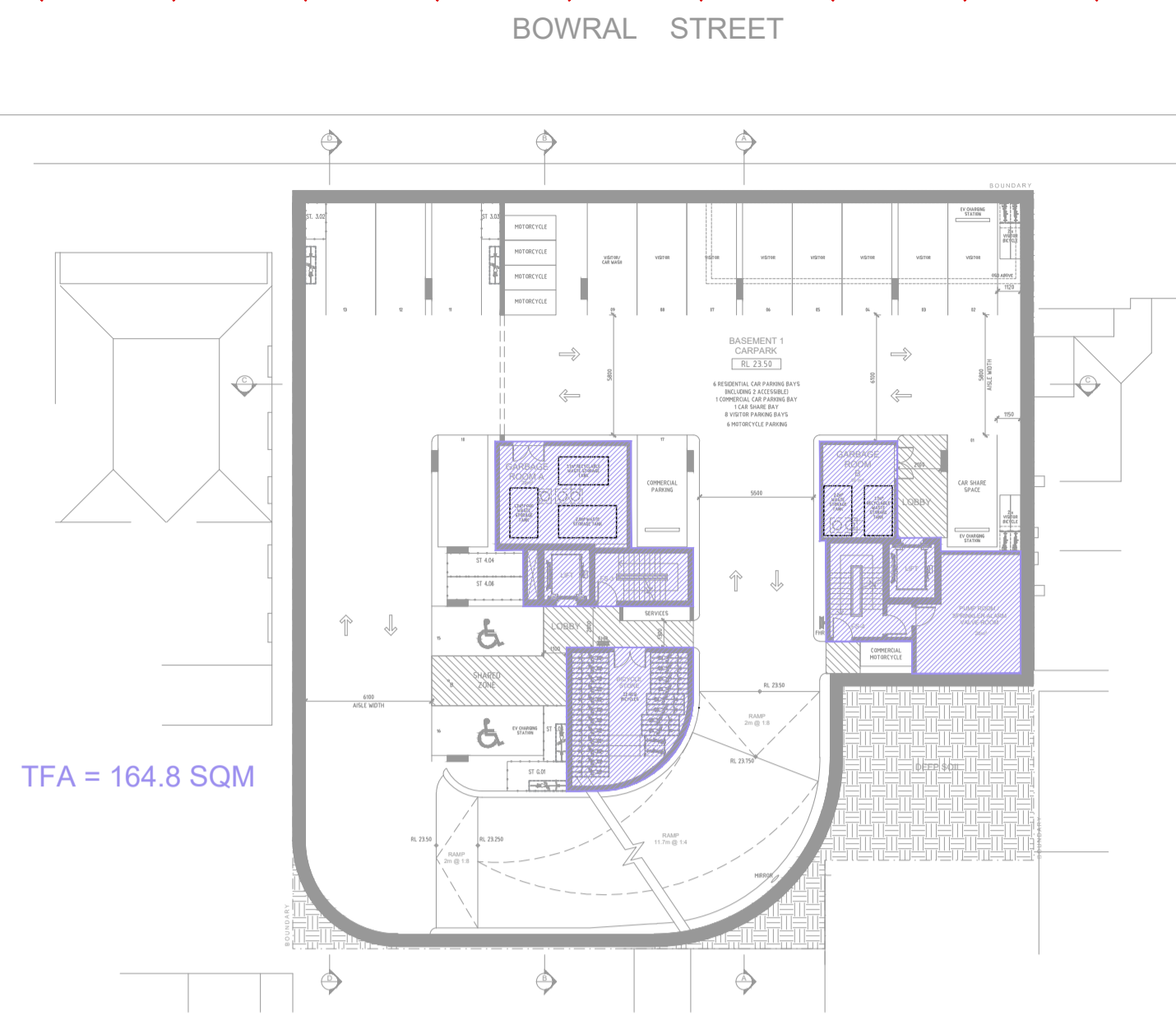


1 Basement 2 Plan



2 Basement 1 Plan



3 Ground Floor Plan



4 Level 1 Plan



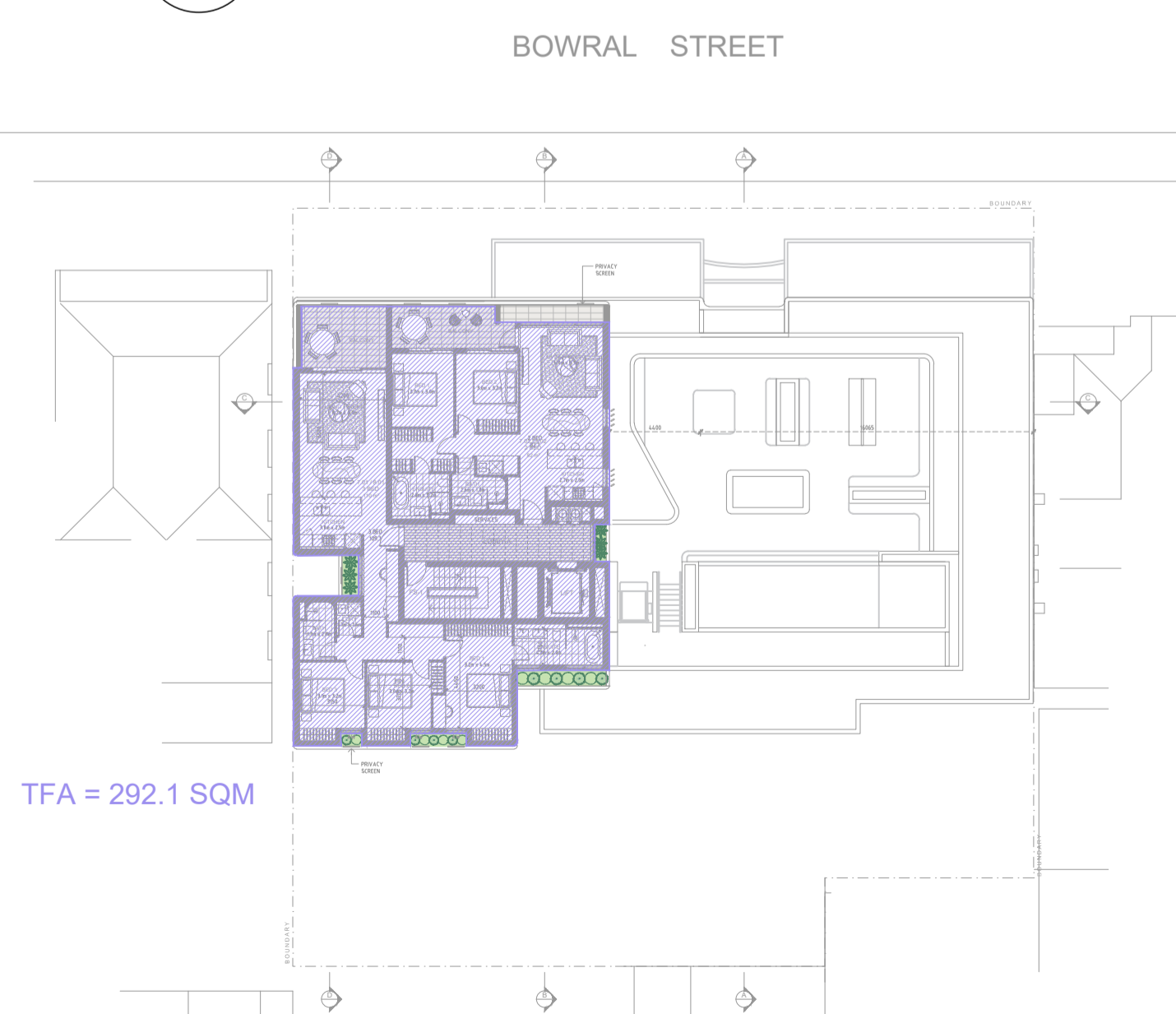
5 Level 2-3 Plan



6 Level 4-5 Plan



7 Level 6 Plan



8 Level 7-8 Plan

TOTAL FLOOR AREA	
Residential	
Level	TFA (SQM)
BASEMENT 2	43.5
BASEMENT 1	164.8
GROUND	401.0
LEVEL 1	538.9
LEVEL 2	755.4
LEVEL 3	755.4
LEVEL 4	702.1
LEVEL 5	702.1
LEVEL 6	292.1
LEVEL 7	292.1
LEVEL 8	292.1
<b>TOTAL</b>	<b>4855.7</b>

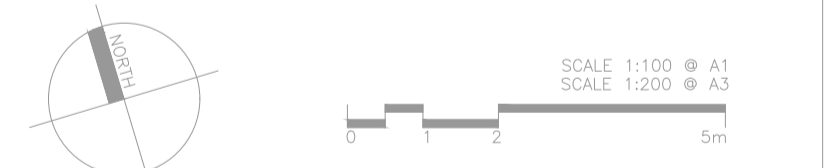
**GENERAL NOTES:**

- ALL WORKS TO COMPLY WITH BUILDING CODE OF AUSTRALIA, REQUIREMENTS OF RELEVANT STATUTORY AUTHORITIES/ LOCAL GOVERNMENT & RELEVANT AUSTRALIAN BUILDING STANDARDS.
- CONTRACTOR TO VERIFY ALL DIMENSIONS ON SITE BEFORE COMMENCING WORK. SHOULD A DISCREPANCY BE IDENTIFIED PLEASE CONFIRM WITH ARCHITECT PRIOR TO PROCEEDING (DO NOT SCALE FROM DRAWINGS).
- DRAWINGS FOR THE PURPOSES OF DA ONLY - FURTHER CONSULTANT / AUTHORITY COORDINATION WILL BE REQUIRED AT CC STAGE WHICH MAY IMPACT ON DESIGN AND PLANNING LAYOUTS.
- COPYRIGHT OF DESIGN SHOWN HEREON IS RETAINED BY PBD ARCHITECTS AND AUTHORITY IS REQUIRED FOR ANY REPRODUCTION.

- LEGEND:**
- AW AWNING WINDOW
  - AH ACCESS HATCH
  - A/C A/C CONDENSER UNITS
  - B BOLLARD
  - EV ELECTRIC VEHICLE
  - F FIXED WINDOW
  - FH FIRE HYDRANT
  - FHR FIRE HOSE REEL
  - FS FIRE STAIRS
  - GC GARBAGE CHUTE
  - HW HIGHLIGHT WINDOW
  - MB MAILBOX TO FUTURE DETAIL
  - OP OPAQUE GLAZING
  - R 240L RECYCLING BIN STORAGE
  - ST WHEEL STOP
  - WT HOT WATER UNITS

- MATERIALS LEGEND:**
- AFG ALUMINIUM FRAMED GLAZING
  - CO1 CONCRETE WALL 1
  - CO2 CONCRETE WALL 2
  - CO3 CONCRETE WALL 3
  - FCE METAL FENCE
  - GB FRAMELESS TOUGHENED GLASS BALUSTRADE (TO BCA/AUSTRALIAN STANDARDS)
  - LT LANDSCAPED TRELLIS
  - MB METAL BALUSTRADE
  - PS1 HORIZONTAL PRIVACY SCREEN (TO FUTURE SELECTION)
  - PS2 VERTICAL PRIVACY SCREEN (TO FUTURE SELECTION)
  - RD ROLLER DOOR
  - RW-1 PAINTED WALL/SELECTED PAINT FINISH P1
  - RW-2 PAINTED WALL/SELECTED PAINT FINISH P2
  - SW REUSED SANDSTONE LOOK WALL (TO FUTURE DETAIL)
  - TC TIMBER CLAD SOFFIT (NON-COMBUSTIBLE TO AS 1530.1)
  - SR STUCCOED RENDER WALL (CONCRETE LOOK)

ISSUE	DATE	DESCRIPTION
D	08.02.2023	AMENDED DA
C	10.11.2022	AMENDED DA
B	09.11.2022	AMENDED DA
A	03.11.2022	ISSUED FOR DA



CLIENT:  
Mr. Darijo Dugandzic

ARCHITECT:  
**PBD | ARCHITECTS**  
ABN 36 147 035 550  
P - 02 9698 8140 E - info@pbdarchitects.com.au W - www.pbdarchitects.com.au  
Level 2, 52 Albion Street, Surry Hills NSW 2010  
Nominated Architect: Paul Buljevic NSW 7768

PROJECT:  
PROPOSED RESIDENTIAL FLAT BUILDING  
6-10 BOWRAL STREET, KENSINGTON, NSW.

MARCH 2022  
DRAWING TITLE:  
**Total Residential Floor Area Diagram**

SCALE: NTS	DRAWING NO: <b>DA480</b>	ISSUE: <b>D</b>
PROJECT NO: 2104		